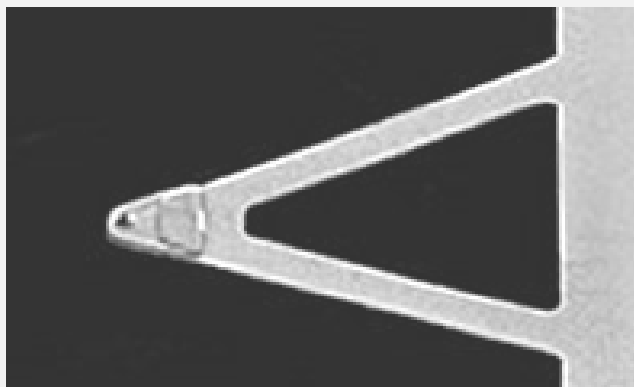


Technical Specifications

Probe Part Number: **SN17**

SensaProbes for Silicon Nitride Probes for Soft Contact and Contact in Liquid. Fits all commercially available AFM systems.

SensaProbes are AFM tips developed using a new process and consistent production techniques to remove excess quality control costs. This benefit saves AFM labs hundreds of dollars on every box of probes. These probes are highly recommended for early stage scans and student use.



Quick Reference Part Numbers (for ordering purposes)

15 Probes	SN17-15
50 Probes	SN17-50
410 (Wafer)	SN17-W

Value	Spring Constant	Resonance Frequency	Reflex Coating Options	Tip Curvature Radius	Length
Cantilever	0.045 N/m	17 kHz	No coating, Gold	<10nm	200µm

Value	Width	Thickness	Material	Front Plane	Back Plane
Cantilever	22µm	0.6µm	Silicon	31°	9°

- 1 All values are nominal.
- 2 Alignment grooves included.

SensaProbes

www.sensaprobes.com

info@sensaprobes.com

408.313.6788