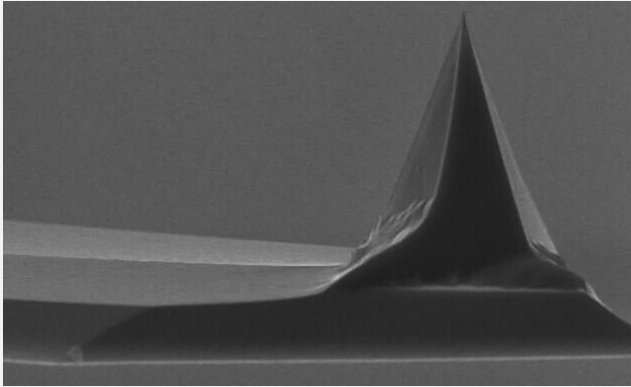


Technical Specifications

Probe Part Number: **EFM60**

SensaProbes for Electronic Force Microscopy (EFM), fits all commercially available AFM systems.

EFM60 SensaProbes are *conductive coated with Pt/Ir* on both sides for force modulation mode, available in other modes upon request. These AFM tips are developed using a new process and consistent production techniques to remove excess quality control costs. This benefit saves AFM labs hundreds of dollars on every box of probes. These probes are highly recommended for early stage scans and student use.



Quick Reference Part Numbers (for ordering purposes)

15 Probes

EFM60-15

50 Probes

EFM60-50

410 (Wafer)

EFM60-W

Value	Spring Constant	Resonance Frequency	Reflex Coating Options	Tip Curvature Radius	Length
Cantilever	3 N/m	60 kHz	No coating, Aluminum, Gold	<10nm	225µm

Value	Width	Thickness	Material	Front Plane	Back Plane
Cantilever	30µm	3µm	Silicon	31°	9°

1 All values are nominal.

2 Alignment grooves included.

SensaProbes

www.sensaprobes.com

info@sensaprobes.com

408.313.6788